



PLANNING AND CONSTRUCTION
1130 Fifth Avenue • Chula Vista, CA 91911-2896
(619) 691-5553 • FAX (619) 420-0339

PAUL D. WOODS
DIRECTOR OF PLANNING & CONSTRUCTION

DATE: June 25, 2015
TO: Dr. Karen Janney, Superintendent
FROM: Paul Woods, Director of Planning & Construction
RE: **Attendance Boundaries**

Attached are copies of our Middle School and High School boundaries. They are available on our district website by clicking the "Find My School" link at the very top of the main web page. This is an interactive website that allows parents and the public to enter an address to determine their resident school. The "home" icon can also be moved on the map if the location is not quite right.

Generally our middle schools are paired with high schools with the following exceptions: National City Middle and Granger Jr. High feed into Sweetwater Union High and Eastlake Middle and Rancho Del Rey Middle feed into three high schools (Eastlake, Olympian and Otay Ranch).

Only Bonita Vista Middle and High schools share a common attendance boundary. There are four middle schools where the middle school attendance boundary is completely within a high school boundary: Chula Vista Middle, Granger Junior High, National City Middle and Southwest Middle.

Regarding the history of the Castle Park Middle School attendance boundary, a 1992-93 high school boundary map shows that the eastern edge of residential development south of Telegraph Road and east of the 805 corresponds with the current eastern boundaries of Hilltop and Castle Park Middle Schools. In 2002 the boundary for Rancho Del Rey Middle School was created and left all of that existing development east of the 805 within the Hilltop and Castle Park Middle school boundaries. At the same time the western boundary of the Otay Ranch High school attendance area was created at the 805 (south of Telegraph Canyon Road) and intentionally did not match the middle school boundaries (maps attached). This was the last time a middle school boundary was created.

The last new high school attendance boundary was created for Olympian High School in 2005. In the past 10 years there have only been minor adjustments and the formal creation of Optional Area C which had been an informal agreement in the past.

PW/dc

Attachments (3)

Maximizing student achievement for 7th – 12th grade students and adult learners throughout South San Diego County

"Sweetwater Union High School District programs and activities shall be free from discrimination based on age, gender, gender identity or expression, or genetic information, sex, race, color, religion, ancestry, national origin, ethnic group identification, marital or parental status, physical or mental disability, sexual orientation; the perception of one or more of such characteristics; or association with a person or group with one or more of these actual or perceived characteristics." - SUHSD Board Policy 0410.

Attachment #4

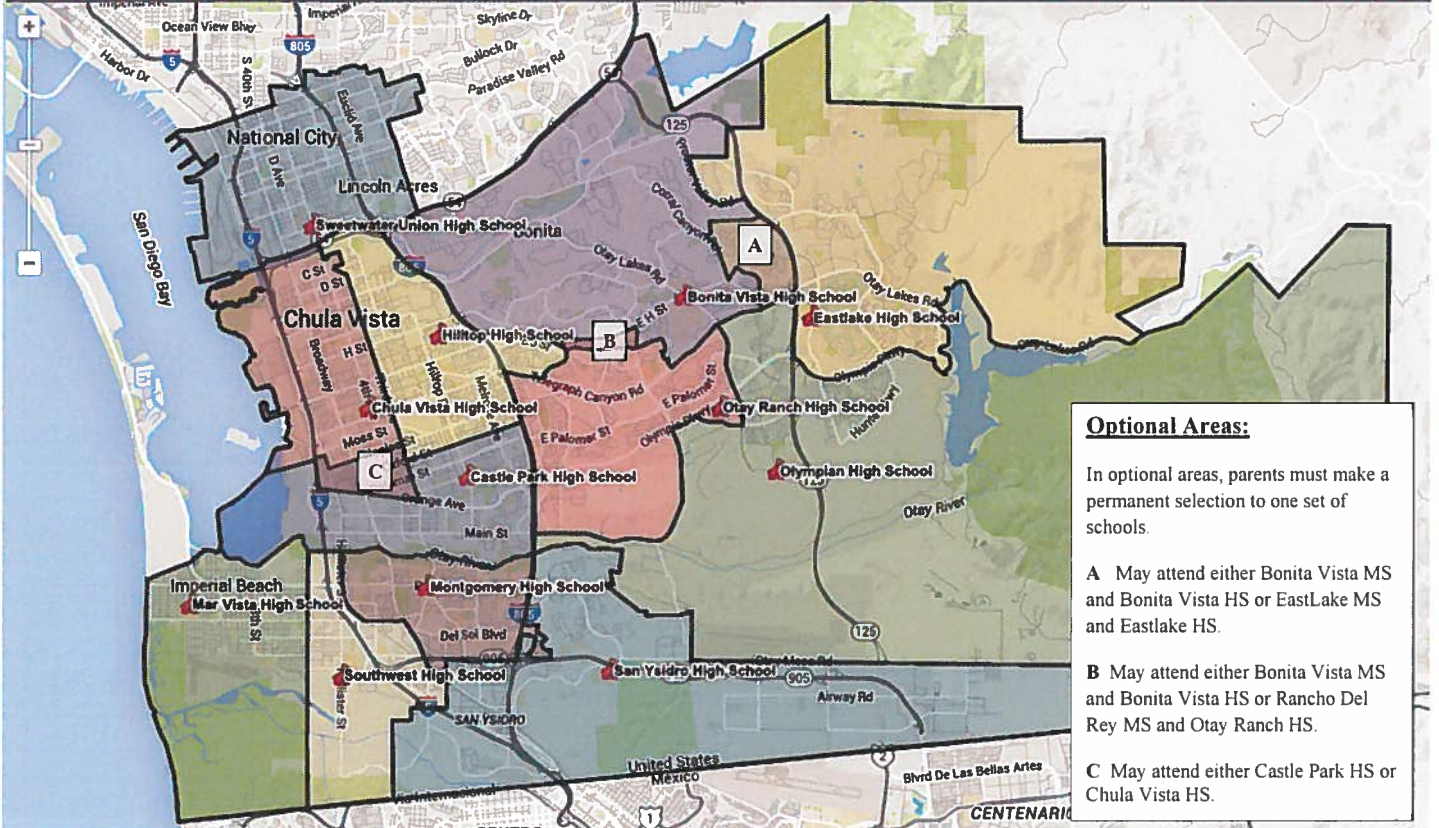


High School Attendance Boundaries

If you have any questions, please call the Planning and Construction Department at 619-691-5553.
For student transfers, please contact *Student Support Services* at 619-691-5596.
For bussing or other *Transportation* questions, please call 619-691-5527.

DECISION|INSITE

Admin Edit Tools Help



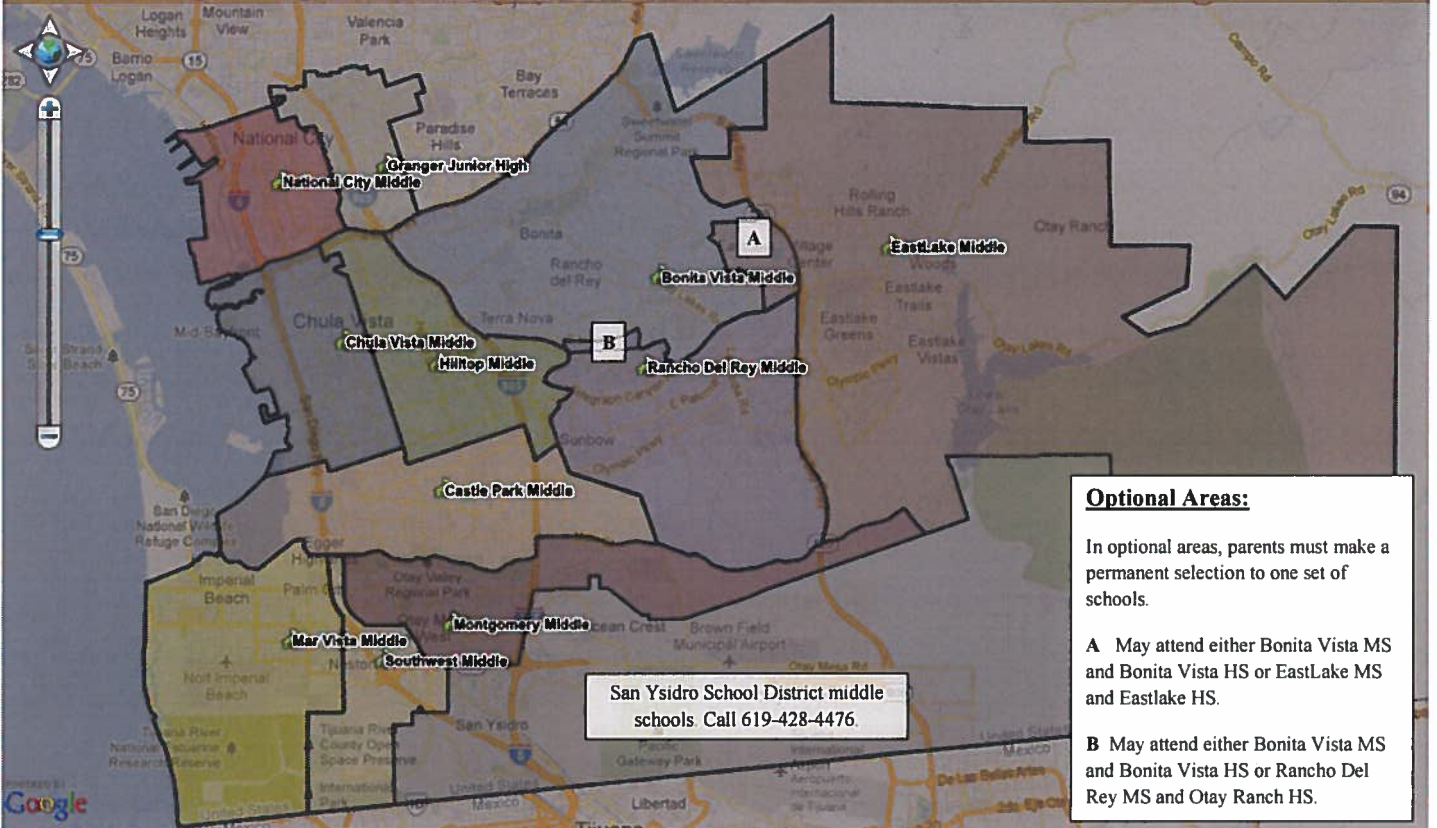


Middle School Attendance Boundaries

If you have any questions, please call the Planning and Construction Department at 619-691-5553.
For student transfers, please contact Student Support Services at 619-691-5596.
For bussing or other Transportation questions, please call 619-691-5527.

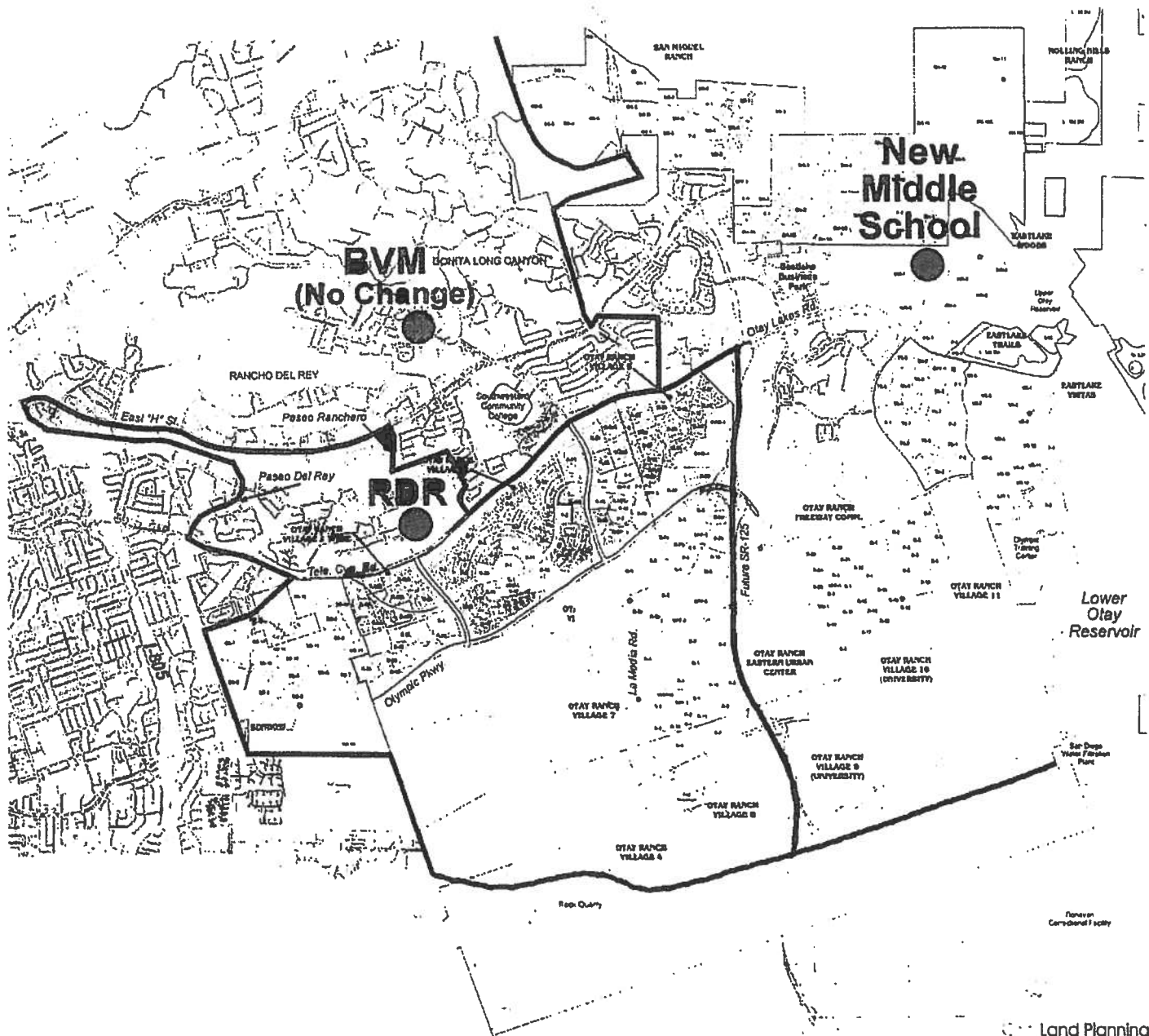
DECISION|INSITE

Admin Tools Reports Help



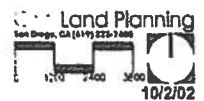
Recommended Middle School Boundaries

October 17, 2002

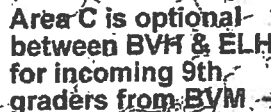


Sweetwater Union High School District

Note: Base data from
P&G Consultants Inc.



October 17, 2002

More. Base data from
R&D Company's In-